

**CONNECTICUT WEEKLY DIADROMOUS FISH REPORT**  
 Report Date: June 3, 2014



This is a report generated by the Connecticut Department of Environmental Protection/ Inland Fisheries Division- Diadromous Program. For more information, contact Steve Gephard, 860/447-4316. For more information about fish runs on the Connecticut River call the USFWS Hotline at 413/548-9628 or visit the USFWS website at [www.fws.gov/r5crc](http://www.fws.gov/r5crc). For more information about Atlantic salmon, visit the Connecticut River Salmon Association at [www.ctiversalmon.org](http://www.ctiversalmon.org).

**CONNECTICUT RIVER LOCATIONS**

<b>FISHWAY (RIVER)</b>	<b>ATLANTIC SALMON</b>	<b>AMER. SHAD</b>	<b>ALEWIFE</b>	<b>BLUEBACK HERRING</b>	<b>GIZZARD SHAD</b>	<b>STRIPED BASS</b>	<b>SEA LAMPREY</b>	<b>SEA-RUN TROUT</b>	<b>AMER. EEL</b>
<b>Rainbow*</b> (Farmington)	2	429	0	25	0	0	3,679	0	1
<b>Leesville</b> (Salmon)	0	-	-	0	-	-	0***	0	0
<b>StanChem*</b> (Mattabeset)	0	5	254	79	102	-	18	1	5
<b>Moulson Pond*</b> (Eightmile)	0	3	13	11	0	0	32	0	-
<b>Mary Steube*</b> (Mill Brook)	-	-	1,543 (final)	-	-	-	-	-	-
<b>Rogers Lake+</b> (Mill Brook)	-	-	0 (final)	-	-	-	-	-	-
<b>WestSpringfield</b> (Westfield- MA)	0/0	3,633	0	4	0	0	938	0	0
<b>Holyoke</b> (Connecticut- MA)	13	304,897	0	624	210	14	6,562	0	0
<b>Manhan River*</b> (Manhan- MA)									
<b>Turners Falls*</b> (Connecticut- MA)	0	11,882	-	0	0	0	45	-	-
<b>Vernon*</b> (Connecticut- VT)	0	2,222	-	0	0	0	14	-	0
<b>Bellows Falls*</b> (Connecticut- VT)	0	0	-	0	0	0	0	-	0
<b>Wilder*</b> (Connecticut- VT)	0	-	-	-	-	-	0	-	0
<b>Other</b> (all sites)	0								
<b>TOTALS=</b>	15	308,959	1,810	743	312	14	11,229	1	6
<b>(last year's totals)</b>	92	397,486	9,597	3,228	824	208	24,939	18	16

Fishways listed in gray font above are not yet opened for the season. In some cases, the fishways will be opened soon. In the case of the fishways on the Connecticut River, some fishways are not opened until significant numbers of fish pass through the fishway immediately downstream of them. If that never happens, the fishway may not be opened during the season.

\*There is a video camera that records passage. There is a considerable lag between the date a tape is recorded and when staff is able to count fish from the tape, so these numbers will not represent up-to-date counts until after the end of spring season.\*\*\* Population estimates based on end-of-the-season nest surveys.- +There is an electronic fish counter at this fishway.

NOTE: All fish that pass through the Turners Falls, Vernon, Bellows Falls, and Wilder fishways had to first go through the Holyoke Fishlift where they were counted. Therefore those fish are not included in the totals at the bottom.

## COMMENTS:

The **American shad** continues to roll along with Holyoke lifting close to 60,000 since last report. The water temperature at Holyoke has warmed-up a bit and is at 16 C (61 F), still cool for this point in the season. I'm happy to report that many of those fish are getting through the Gatehouse Fishway and are now passing Vernon in good numbers. Dave Ellis of our program continues to truck shad out of Holyoke he reports that the fish look good and are trucking nicely. I think he'll be done the end of this week. The count of shad decreased a bit at Rainbow. Not all the shad make it from the counting station to the headpond – some will drop back down the fishway.

Despite technical difficulties (camera, power, ants) three American shad were counted passing the Moulson Pond Fishway last week (see photo below). Volunteers have reported seeing them in the fishway past years, but this is the first actual verification that they can make it through the entire fishway and into the headpond. We ceased stocking pre-spawn shad there long ago – time may tell if there is an actual run (very small) of Eightmile River shad, or if these are merely strays from the CT River. When downloading data there last Thursday evening I found that we had lost our video signal. It has been off-line ever since. Long story short is that the video capture device had become infested with little black ants and their eggs. I will be there tomorrow with a new video capture device and a new infrared underwater camera. The light that the original camera emitted seemed to cause some behavioral issues for nighttime running alewife, so I am excited to test this new equipment. If it works we intend to roll it out to other sites next year (as budgets allow, of course).

The **blueback herring** out of Leesville; I suspect for the year. Ken Sprankle of the USFWS sampled Wethersfield Cove the end of last week and found far fewer bluebacks since the last report. The lower Farmington is still holding fish, but Ken reports that many were post-spawn; so I expect that they will be heading back out to sea very soon.

The **Atlantic salmon** count is now up to 15. Bruce Williams of our program trapped, tagged and released the second of the season for Rainbow Fishway today (see photo below). It was a bright female about 31 inches long and in fair shape; it had some scale loss – not sure why. No hooking wounds detected. We had seen this fish show-up on our video detection system a few days ago, so maybe the scale loss happened as it was running up and down the fishway.



*Bruce Williams and crew tag R-002-14 – the second Atlantic Salmon of the season for Rainbow. Note the yellow tag in the upper right-hand corner.*



*One of the three American Shad counted thus far passing through the Moulson Pond Fishway.*

## OTHER LOCATIONS WITHIN CONNECTICUT

<b>FISHWAY (RIVER)</b>	<b>AMER. SHAD</b>	<b>ALEWIFE</b>	<b>BLUEBACK HERRING</b>	<b>GIZZARD SHAD</b>	<b>STRIPED BASS</b>	<b>SEA LAMPREY</b>	<b>SEA-RUN TROUT</b>	<b>AMER. EEL</b>
<b>Greeneville*</b> (Shetucket R., Norwich)	2,248	787	169	120	7	0	0	5
<b>Taftville*</b> (Shetucket R., Norwich)	0	0	0	0	0	0	0	0
<b>Occum*</b> (Shetucket R., Norwich)	0	0	0	0	0	0	0	0
<b>Tunnel*</b> (Quinebaug R., Preston)	45	28	0	2	0	0	0	0
<b>Kinneytown*</b> (Naugatuck R., Seymour) (out of order)	0	1	0	0	0	13	0	0
<b>Hallville Pond*</b> (Poquetanuck Br. Preston)	-	47	0	0	-	0	0	0
<b>Latimers Brook**</b> (Latimers Br., E.Lyme)	-	17,003	Season Final Count					
<b>Gorton Pond</b> (Pattagansett R., E.Lyme)	-	0	0					
<b>Brides Brook**</b> (Brides Brook, E.Lyme)		265,969	Season Final Count					
<b>Clarks Pond</b> (Indian River, Milford)		90	0	-	-	-	-	
<b>Branford Supply Pond Dam**</b> (Queach Br., Branford)		1,395	Season Final Count					
<b>Landon Dam**</b> (West River, Guilford)		886	Season Final Count					
<b>Haakonsen Fishway*</b> (Quinnipiac R., Wallingford)	3	3,078	862	135	0	140	3	
<b>Bunnells Pond*</b> (Peqonnock R., Bridgeport)		7,916	0	0	0			
<b>Wood Dam**</b> (Saugatuck R., Westport)		3,414	0	0				
<b>Mianus River Pond* **</b> (Mianus R., Greenwich)		49,081	18,315	0	0	0	0	-

*\*Fish passage is video-recorded and counts are made off of tapes several days later so these data are always lagged a little behind. This report covers passage up to the following dates for these fishways:*

*Greeneville= 5/22 Taftville= 5/19 Occum= n.a. Tunnel= 6/2 Kinneytown= 6/2 Haakonsen= 6/1 Hallville= 6/2*

*\*\*These locations have an electronic fish counter and are used as index sites for river herring runs. The counter is checked daily Monday-Friday. Monday counts typically include all weekend passage. These counts are usually up-to-date but some may lag behind a day or two, occasionally.*

*+This location has a fish trap and fish are enumerated prior to release.*

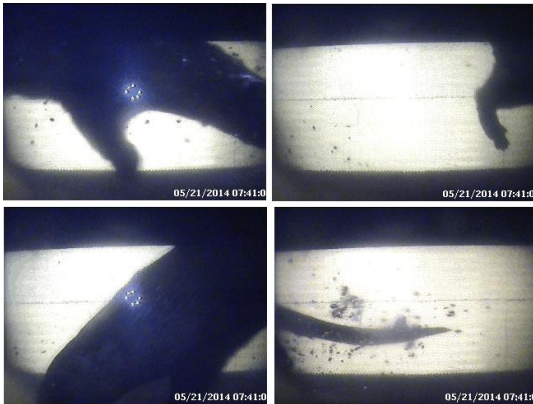
*Counts in parentheses indicate numbers seen in a run that is now over and no further fish were counted during the past week. Typically used for alewife runs later in June.*

## COMMENTS:

I'm going to steal Steve's thunder here and declare the alewife run over!!! We had fish passing Bunnells as late as last Saturday morning, but nothing from then through Monday morning. I know the fish are going to make me a liar, so I'll throw-in the caveat that if we do see more fish (I hope), they were merely stragglers, or perhaps spent fish. Our video review partners at Bunnells (Beardsley Zoo) were very happy to report having their own river otter (see photo below) – not to be outdone by Ollie the Otter and the folks that operate the Occum Fishway (Norwich Public Utilities). Otter envy I guess.

The shad run on the Shetucket River also continues. Norwich Public Utilities hauled a load of shad upstream just today. More shad have been counted passed the Tunnel Dam Fishlift as staff there get caught-up to data one their video review. The Tunnel Eel Pass is up and running. This eel pass has been very successful – some years passing close to 40,000 in a year! The big news in the CT eel scene is that Governor Malloy vetoed the bill that would have moved toward opening a glass eel fishery in Connecticut. [http://www.ctnewsjunkie.com/archives/entry/malloy\\_vetoes\\_glass\\_eel\\_fishing\\_signs\\_state\\_budget/](http://www.ctnewsjunkie.com/archives/entry/malloy_vetoes_glass_eel_fishing_signs_state_budget/)

**Glass eels-** Fishing Brook = 14,441; Mill River Eel Trap= 3,961; Greenville Eel Lift= 1,163, Lower Millpond (Old Lyme)= 61,101 (Last weeks number – no new report).



***Restore the fish and they will come.*** A sequence of images from the video gallery at the exit of the Bunnells Fishway. This is, of course, in addition to the cormorant that is a routine visitor.