

# CONNECTICUT WEEKLY DIADROMOUS FISH REPORT

Report Date: April 10, 2018



This is a report generated by the Connecticut Department of Environmental Protection/ Inland Fisheries Division- Diadromous Program. For more information, contact Steve Gephard, 860/447-4316. For more information about fish runs on the Connecticut River call the USFWS Hotline at 413/548-9628 or visit the USFWS website at [www.fws.gov/r5cfc](http://www.fws.gov/r5cfc). For more information about Atlantic salmon, visit the Connecticut River Salmon Association at [www.ctriversalmon.org](http://www.ctriversalmon.org).

## CONNECTICUT RIVER LOCATIONS

FISHWAY (RIVER)	ATLANTIC SALMON	AMER. SHAD	ALEWIFE	BLUEBACK HERRING	GIZZARD SHAD	STRIPED BASS	SEA LAMPREY	STURGEON/ TROUT++	AMER. EEL
Rainbow* (Farmington)	0	0	0	0	0	0	0	0	0
Leesville (Salmon)	0	-	-	0	-	-	0**	0	0
StanChem* (Mattabesett)	0	0	0	0	0	-	0	0	0
Moulson Pond* (Eightmile)	0	0	0	0	0	0	0	0	-
Mary Steube* (Mill Brook)	-	-	4	-	-	-	-	-	-
Rogers Lake+ (Mill Brook)	-	-	0	-	-	-	-	-	-
West Springfield (Westfield-MA)	0	0	0	0	0	0	0	0	0
Holyoke (Connecticut-MA)	0	0	0	0	0	0	0	0	0
Manhan River* (Manhan-MA)	0	0	0	0	0	0	0	0	0
Turners Falls* (Connecticut-MA)	0	0	-	0	0	0	0	-	-
Vernon* (Connecticut-VT)	0	0	-	0	0	0	0	-	0
Bellows Falls* (Connecticut-VT)	0	0	-	0	0	0	0	-	0
Wilder* (Connecticut-VT)	0	-	-	-	-	-	0	-	0
Other (all sites)	0								
TOTALS=	0	0	0	0	0	0	0	0	0
(last year's totals)	19	392,057	8,606	922	800	230	23,955	1/9	20

Fishways listed in gray font above are not yet opened for the season. In some cases, the fishways will be opened soon. In the case of the fishways on the Connecticut River, some fishways are not opened until significant numbers of fish pass through the fishway immediately downstream of them. If that never happens, the fishway may not be opened during the season.

\*There is a video camera that records passage. There is a considerable lag between the date a tape is recorded and when staff is able to count fish from the tape, so these numbers will not represent up-to-date counts until after the end of spring season.\*\* Population estimates based on end-of-the-season nest surveys. +There is an electronic fish counter at this fishway. ++Shortnose Sturgeon (Holyoke)/Sea-run Trout (other locations) NOTE: All fish that pass through the Turners Falls, Vernon, Bellows Falls, and Wilder fishways had to first go through the Holyoke Fishlift where they were counted. Therefore those fish are not included in the totals at the bottom.

#### COMMENTS:

Holyoke is still not operating but the pre-season inspections are taking place and it is likely to start operation soon. We'll open StanChem and Leesville by Friday and Rainbow early next week. Ken Sprankle of the USFWS has begun his annual sampling for river herring. Late last week he found Alewives in the Mattabesset River and today he got a few in Wethersfield Cove—so they're in the river. Based on his first report, we opened Mary Steube on Mill Brook in Old Lyme and have counted four fish so far. Moulson Pond on the Eightmile River is open and Vallin is back on the job reviewing video but no fish yet.

As you might know, our Division is being heavily impacted by retirements. Many of us were hired about the same time and so it stands to reason that retirements will be clustered. In the last two months, we said goodbye to Bob Jacobs and Tim Barry, the supervising biologists in the Eastern District and Western District, respectively, Eileen O'Donnell a biologist in the Eastern District, Bill Gerrish a biologist in the Hartford office, and just a few days ago, Mark Alexander the Assistant Director for Marine Fisheries in Old Lyme. At this time, we do not have authorization to replace any of these people, just like our last flurry of retirements. So in addition to the loss of all of this important institutional knowledge, we have lost considerable capacity. Our Division is working hard and everyone is getting new assignments to make up for the loss but it stands to reason that our accomplishments and response time will suffer. But Dam Safety is hiring! Supervising Civil Engineer, the Dam Safety program, at our downtown Hartford Office. Engineers should check out this link:

<https://www.jobapscloud.com/CT/sup/bulpreview.asp?R1=180404&R2=6365EE&R3=001>

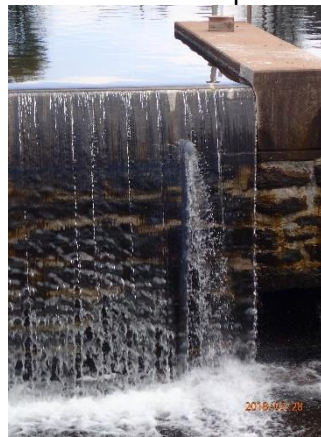
Opening Day fishing season is this Saturday and World Fish Migration Day is the following Saturday <http://www.ctriversalmon.org/world-fish-migration-day-in-connecticut/> and <https://www.worldfishmigrationday.com/events> . Fourteen events in Connecticut. The next day, Sunday, is Earth Day.

#### Continuing our early season reports of what happened in the latter half of 2017:

When dam owners need to repair their dams, they need to apply for a DEEP Dam Safety Permit and we can advise that program if fish passage should be made a condition of the permit. The Broad Brook Dam is located on Broad Brook in the village of Broad Brook, probably near the Broad Brook Brewery and is owned by the Town of East Windsor, which sought a permit to repair the old mill dam in the center of the village. There was no need for a traditional fishway because the dam is located atop of a ~20 foot waterfall that is a natural barrier to most fish. But the dam is inhibiting the passage of American Eel, which can get over the falls but a vertical dam face is more difficult. Our program worked with the engineer and contractor to install a Delaware-style eel pass the middle of the repaired spillway. It is hard to see in the photo below due to the water. I'll take a photo of it next summer when there is not so much spill



*The Broad Brook Dam (shown here last summer) was in need of repair. A Delaware style eel pass was added during the winter repairs. Note that the top of the dam has wooden flashboards.*



*A close-up of the eel pass after repairs. The flashboards were replaced with concrete and a PVC pipe was passed through for the eel pass. The pipe (barely distinguishable through the spilling water) is full of chain for the eels to climb up.*

## OTHER LOCATIONS WITHIN CONNECTICUT

<b>FISHWAY (RIVER)</b>	<b>AMER. <u>SHAD</u></b>	<b><u>ALEWIFE</u></b>	<b>BLUEBACK <u>HERRING</u></b>	<b>GIZZARD <u>SHAD</u></b>	<b>STRIPED <u>BASS</u></b>	<b>SEA <u>LAMPREY</u></b>	<b>SEA-RUN <u>TROUT</u></b>	<b>AMER. <u>EEL</u></b>
<b>Greeneville*</b> (Shetucket R., Norwich)	0	0	0	0	0	0	0	0
<b>Taftville*</b> (Shetucket R., Norwich)	0	0	0	0	0	0	0	0
<b>Occum*</b> (Shetucket R., Norwich)	0	0	0	0	0	0	0	0
<b>Tunnel*</b> (Quinebaug R., Preston)	0	0	0	0	0	0	0	0
<b>Kinneytown*</b> (Naugatuck R., Seymour)	0	0	0	0	0	0	0	0
<b>Hallville Pond*</b> (Poquetanuck Br. Preston)	-	0	0	0	-	0	0	0
<b>Jordan Brook **</b> (Jordan Brook, Waterford)	-	5	0	0	-	0	0	0
<b>Latimers Brook**</b> (Latimers Br., E.Lyme)	-	222	-	-	-	-	-	-
<b>Gorton Pond**</b> (Pattagansett R., East Lyme)		0	-	-	-	-	-	-
<b>Brides Brook**</b> (Brides Brook, E.Lyme)		58,000						
<b>Chapmans Pond*</b> (Menunketesuck R., Clinton)		1	0	0	0	0	0	0
<b>Branford Supply Pond Dam**</b> (Queach Br., Branford)		0	0	0	-	-	-	-
<b>Lower Guilford Lake**</b> (East River, Guilford)		0	0	-	-	-	-	-
<b>Haakonsen Fishway*</b> (Quinnipiac R., Wallingford)	0	0	0	0	0	0	0	0
<b>Hanover Pond Fishway*</b> (Quinnipiac River, Meriden)		0	0	0	-	0	-	0
<b>Bunnells Pond*</b> (Pegonnock R., Bridgeport)	-	0	0	0	0	0	0	-
<b>Wood Dam**</b> (Saugatuck R., Westport)		0	0	-	-	-	-	-
<b>Mianus River Pond* **</b> (Mianus R., Greenwich)		0	0	0	0	0	0	-

*\*Fish passage is video-recorded and counts are made off of tapes several days later so these data are always lagged a little behind. This report covers passage up to the following dates for these fishways:*

*Greeneville= n.a. Taftville= n.a. Occum= n.a. Tunnel= n.a. Kinneytown= n.a. Haakonsen= n.a. Hallville= n.a. Hanover= n.a.*

*Bunnells= 6/20. n.a.*

**\*\***These locations have an electronic fish counter and are used as index sites for river herring runs. The counter is checked daily Monday-Friday. Monday counts typically include all weekend passage. These counts are usually up-to-date but some may lag behind a day or two, occasionally.

*Counts in parentheses indicate numbers seen in a run that is now over and no further fish were counted during the past week. Typically used for alewife runs later in June.*

## COMMENTS:

We're in a bit of a holding pattern. The calendar is advancing but the water temperature is not. We have been having cool days and nights below freezing and temperatures are holding around 5 C. You can see that fish continue to come in at Brides and we're beginning our trucking. We are taking a load to the Bronx River today. Mianus Pond has also seen some good days and is posting some decent numbers. But other than that, our early season Alewife numbers are low. We've opened most of the fishways along the shoreline and expect to open the rest in another day. We opened Fishing Brook (Old Saybrook) Friday and saw Alewife scales on the rocks. (Sounds like a bad cocktail.)

We have new volunteer helping us out at the Jordan Brook Fishway in Waterford this year. His name is Michael LaForte and he's a local high school student who knows that brook well. We recently worked with the Town of Waterford to erect a new sign at the Jordan Brook Fishway, which tells about the fishway and the local history of that site. The fishway off of 16 Trumbull Road is hard to find but it is a cool steep pass fishway with an eel pass and an electronic fish counter and worth a visit. We'll be reporting the data in these weekly reports.

Save the Sound has two volunteers monitoring former dam removal sites. Jon Vander Werff is monitoring Hyde Pond site in Stonington and has been trapping Alewives daily on Whitford Brook. He's already over 200. Greg Ostrinski is back to help monitor upstream Pond Lily but no fish have been seen there yet. We've also got Marc Rivas from the Norwalk Aquarium helping out at the Davis Pond Fishway in Norwalk. Our old friend Ray Baldwin has been holding down the fort again at Clarks Pond in Milford. No fish reported there yet.

We joined Sally Harold and Mark Mainieri of The Nature Conservancy last Thursday to open fishways on the Saugatuck River system: Wood Dam (with fish counter), Lees Pond, Dorr's Mill, Low's, Grossman, and Newman's. See photos below. No sign of fish yet but there were ospreys out and about. In addition to ospreys, a lot of Great Blues and egrets showing up. We have Black-crowned Night Herons at Bride Brook.

The glass eel run is beginning and those numbers will just go up in the coming weeks.

I hope you'll join us at one or more sites on **World Fish Migration Day**, April 21, the day before Earth Day. For a listing of events, go to <https://www.worldfishmigrationday.com/> or <http://www.ctriversalmon.org/world-fish-migration-day-in-connecticut/>.

And don't forget that this coming Saturday is Opening Day Fishing Season. Streams are in good condition and the trout have been being stocked so all we need is some decent weather on Saturday for a good day.

**Glass eels**- Fishing Brook = 225; Chapmans Pond= operational but no catch yet; Mill River Eel Trap= not operational yet; Greenville Eel Lift= not operational yet; Lower Millpond (Old Lyme)= not operational yet.

My weekly Diadromous Fish Radio show is live on iCRV ([www.iCRVradio.com](http://www.iCRVradio.com)) at 8:00 am on Wednesday and re-played at 3:00 and 7:00 pm that day 8 am on Saturday. iCRV now archives shows so if you miss one, you can go online and click on "Outdoors" and the "Fishing" and find past shows to listen to.



Attaching the attraction water pipe at Wood Dam, Saugatuck River. In back in wetsuit S. Gephard, with blue hat Tim Wildman, in water with waders Bruce Williams, on fishway with back to camera Dave Ellis, foreground, seasonal worker Peter Grundy.



If you're clumsy and drop a co-worker's leatherman in the river, you have to go looking for it. (I found it.) That's me above the fishway exit at Wood dam and yes, the water was cold! Orange stuff is just old spruce cones. (Kirk Photography)